



RERA No. RAJ/P/2024/3404

# ARYA SHINE

खुशियां अब एक नए पते पर !

# BIG SIZE

3BHK FLATS NEAR D-MART, JAGATPURA



RERA No. RAJ/P/2024/3404



# Welcome to Arya Shine...

## Your Dream Lifestyle Awaits

Located near D-Mart, Jagatpura, ARYA SHINE is a thoughtfully designed residential project that redefines urban living. Nestled in one of Jaipur's fastest-growing neighborhoods, ARYA SHINE blends modern comfort with unmatched convenience, making it the perfect choice for families and professionals alike

At ARYA SHINE, you don't just buy a home; you invest in a lifestyle that offers comfort, convenience, and growth.

Discover the perfect balance of modern living and timeless value at ARYA SHINE.



# ABOUT US

## Company Overview:

With 20 years of rich experience in the real estate sector, Arya Group has firmly established itself as one of Jaipur's most reputable and forward-thinking developers. Our journey began with a commitment to creating exceptional living spaces that blend modern designs with functionality. Today, we are a trusted name in the real estate industry, known for our quality construction, timely delivery, and customer-centric approach.

## Our Journey

The story of Arya Group is one of vision, hard work, and a relentless pursuit of excellence. Over the past 20 years, we have transformed the real estate landscape in Jaipur, crafting homes and commercial spaces that resonate with quality, trust, and innovation. From humble beginnings to becoming one of the most respected names in the industry, our journey has been nothing short of remarkable.

Our journey is far from over. With a vision for sustainable living, cutting-edge designs, and transformative real estate solutions, Arya Group will continue to set new standards in the industry. Every project is a new chapter in our story, and every happy resident is a testament to our dedication.

At Arya Group, we believe in not just building homes but in building dreams, one brick at a time. Join us on this exciting journey and be a part of our ever-growing family!

Arya Group – 20 years of trust, excellence, and innovation.

## Our Expertise:

At Arya Group, we specialize in the development of both residential and commercial properties, with a focus on creating spaces that cater to the diverse needs of our customers. Our portfolio includes everything from luxury apartments and 3BHK flats to well-planned commercial spaces. Each project we undertake is a reflection of our commitment to quality, innovation, and sustainability.

## Our Vision

At Arya Group, our vision is to be a leading real estate developer recognized for innovative designs, quality craftsmanship, and a commitment to sustainable living. We aim to create transformative spaces that enhance the quality of life for our customers, foster strong communities, and contribute to the growth and development of Jaipur. Through excellence, integrity, and customer-centric solutions, we envision building a future where every project reflects our dedication to building dreams and creating a legacy of trust.

## Our Mission

At Arya Group, our mission is to deliver high-quality, innovative, and sustainable real estate solutions that create lasting value for our customers. We are committed to building homes and spaces that offer comfort, convenience, and community, while adhering to the highest standards of quality, timely delivery, and customer satisfaction. With a focus on innovation and eco-friendly practices, we aim to lead the real estate industry by creating spaces that not only meet today's needs but also contribute to a better tomorrow.

## Why Choose Arya Group?

- 20 Years of Expertise: Trusted real estate developer with two decades of experience.
- Quality Construction: High-quality materials and craftsmanship for durable, beautiful properties.
- Timely Delivery: Commitment to delivering projects on time.
- Customer-Centric: Tailored solutions and transparent communication for a hassle-free experience.
- Innovative Designs: Modern, functional spaces that enhance comfort and convenience.
- Sustainability: Eco-friendly building practices and energy-efficient solutions.
- Prime Locations: Projects in high-growth areas like Jagatpura, offering long-term value.
- Proven Track Record: Strong portfolio of successful, customer-approved projects.

**Arya Group – Building Trust, Delivering Excellence.**



# Key Features

## Prime Location

Nestled near D-Mart, Jagatpura, ARYA SHINE offers unmatched convenience with proximity to schools, hospitals, shopping centers, and Jaipur International Airport.

1

## Modern Design

Spacious 3 BHK apartments, designed to bring natural light, ventilation, and positivity into your daily life.

2

## Lifestyle Amenities

- Landscaped gardens for a serene retreat.
- Clubhouse to relax, socialize, or host celebrations.
- Dedicated play areas for children and spaces for community bonding.

3

## Secure Living

Gated community with 24/7 security ensures peace of mind for you and your family.

4

# Location Benefits

1

## Shopping Center & Malls

Near Mahal Road, this prime location offers unmatched access to top shopping destinations like **VIVA City Mall**, **Capital Highstreet Mall**, and the upcoming **Pink Wall Mall**—**Rajasthan's largest mall**. For daily essentials, **D-Mart Jagatpura** is just minutes away, ensuring a vibrant and convenient lifestyle.

2

## Close to Leading Hospitals

Prominent healthcare facilities such as **Bombay Hospital**, **Jeevan Rekha Hospital**, and **Narayana Hospital** are easily accessible, offering top-tier medical care in minutes.

3

## Top Educational Institutions Nearby

Renowned schools like **Jay Shree Periwal School**, **JECRC University**, and **Kulish International School** are within a short distance, making it ideal for families. Higher education institutions like **VIT** and **VGU University** are also nearby, ensuring quality education options for students.

4

## Seamless Connectivity

**Strategically** located with easy access to **Jaipur International Airport** (just 15 minutes away), **Jagatpura Railway Station**, and **major highways**, like **Tonk Road**, **Agra Road**, **Ring Road** ensuring **smooth travel** across the city and beyond.

5

## Safe and Secure Neighborhood

**peaceful** and **well-developed** area, offering a **secure environment** and **well-maintained roads**. **Residential communities** adds to the **overall safety**, ensuring **peace of mind** for all residents.

6

## High Growth Potential

**Jagatpura** is a **fast-developing** area with **rising property values** and **growing infrastructure**. Its **strategic location** near key amenities makes it a **promising investment** with **strong future growth potential**.

# Amenities



## Gymnasium

Stay fit amidst fresh air and greenery with outdoor fitness equipment. Designed to inspire a healthy and active lifestyle for all ages.



## Yoga Hall

Rejuvenate your body and mind in a serene and dedicated yoga space. Perfect for meditation, yoga, and wellness activities.



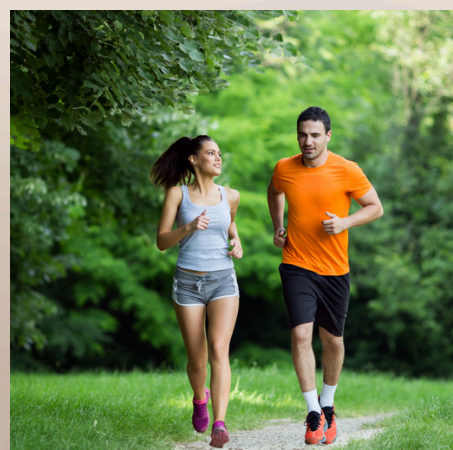
## Indoor Games / Kids Play Area

Indoor games like Table Tennis, Chess, and Carrom, along with a Kids' Play Zone. These facilities promote fun, relaxation, and social interaction for all ages.



## Jogging Track

Refresh your mind and body on a serene, well-maintained track. Ideal for morning jogs or peaceful evening walks in nature.



## Banquet Hall

Host unforgettable celebrations with ease in a spacious, elegant setting. A perfect venue for family functions, birthdays, and community events.



## 24/7 Security

CCTV surveillance and round-the-clock personnel for peace of mind. Keeps you and your loved ones safe at all times.



## Roof top Garden

offers a peaceful retreat with lush greenery and stunning city views. It's the perfect space to relax, socialize, or enjoy nature in the heart of the city.

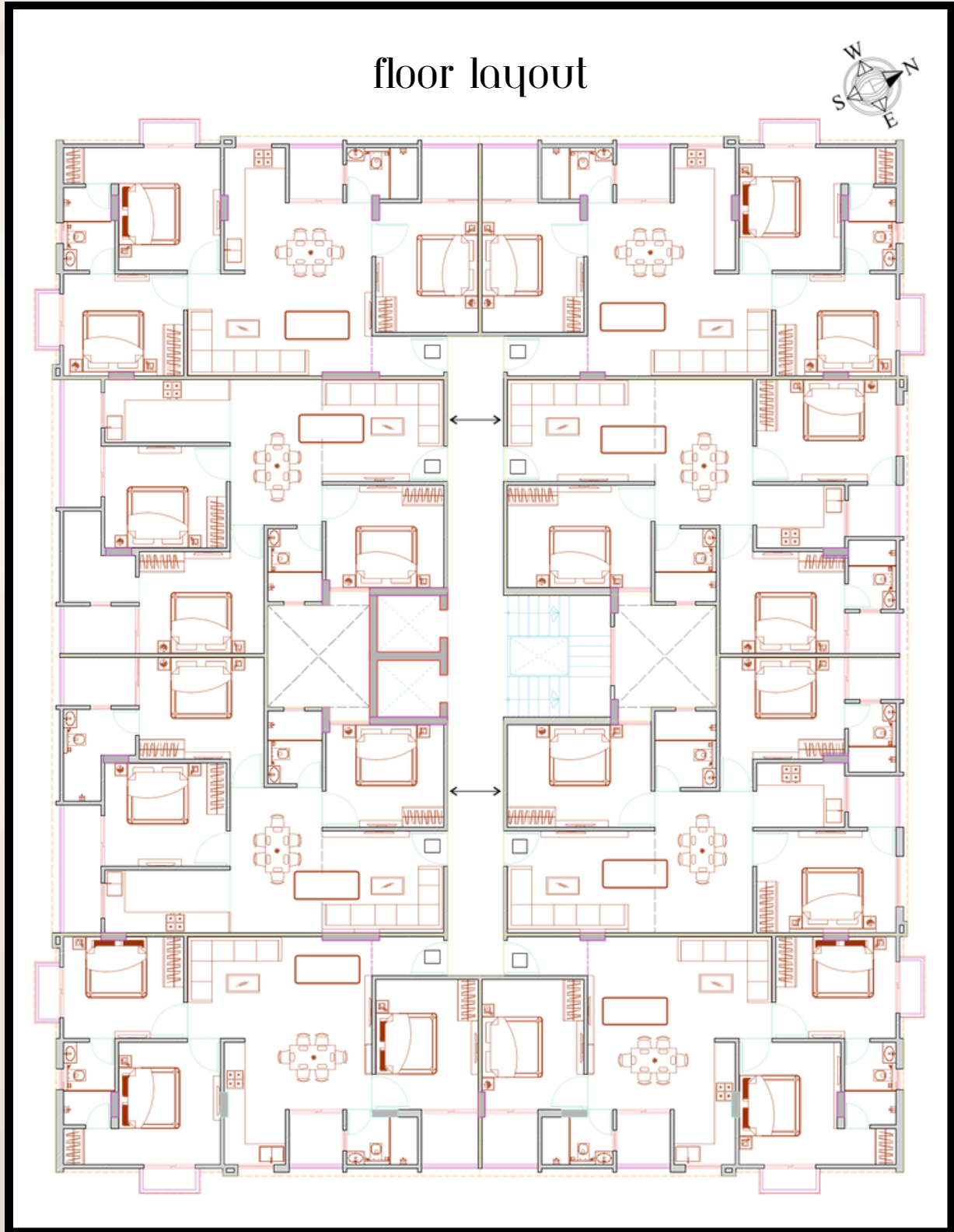


## Smart Card Entrance

Secure, modern access for hassle-free entry. Enhances community security while ensuring easy resident access.



# PROJECT PLAN



**SITE PLAN :** OUR SITE PLAN SHOWCASES THE LAYOUT AND DESIGN OF OUR UPCOMING PROJECT. THIS DOCUMENT PROVIDES A BIRD'S-EYE VIEW OF THE PROJECT SITE, ILLUSTRATING THE ARRANGEMENT OF KEY ELEMENTS.

# floor plans



**TYPE-01**

**3 BHK**

**1482 SQ. FT.** ■■■■■

**TYPE-02**

**3 BHK**

**1517 SQ. FT.** ■■■■■



# floor plans



**TYPE-03**

**3 BHK**

**1509 SQ. FT.** ■■■■■

**TYPE-04**

**3 BHK**

**1452 SQ. FT.** ■■■■■



# floor plans



**TYPE-05**

**3 BHK**

**1447 SQ. FT.** ■■■■■

**TYPE-06**

**3 BHK**

**1503 SQ. FT.** ■■■■■



# floor plans



**TYPE-07**

**3 BHK**

**1507 SQ. FT.** ■■■■■

**TYPE-08**

**3 BHK**

**1453 SQ. FT.** ■■■■■





# Specifications

1

Spacious Floor  
Plans

2

High-Quality  
Finishes

3

Modern Kitchen,  
Bedrooms and  
Bathrooms



4

Smart Home  
Technology

5

Energy  
Efficiency

6

Parking and  
Storage

# Lets' Connect

---



## Site Address:

Ashadeep Green Avenue, Jagatpura, Jaipur

"Experience the height of luxury in our exquisite flats."

"Step into a world of modern comfort, elegance, and sophistication with a glimpse of our luxurious living spaces. Our sample luxury flat sets the standard for a life of opulence and style."

Book Your Visit Today